

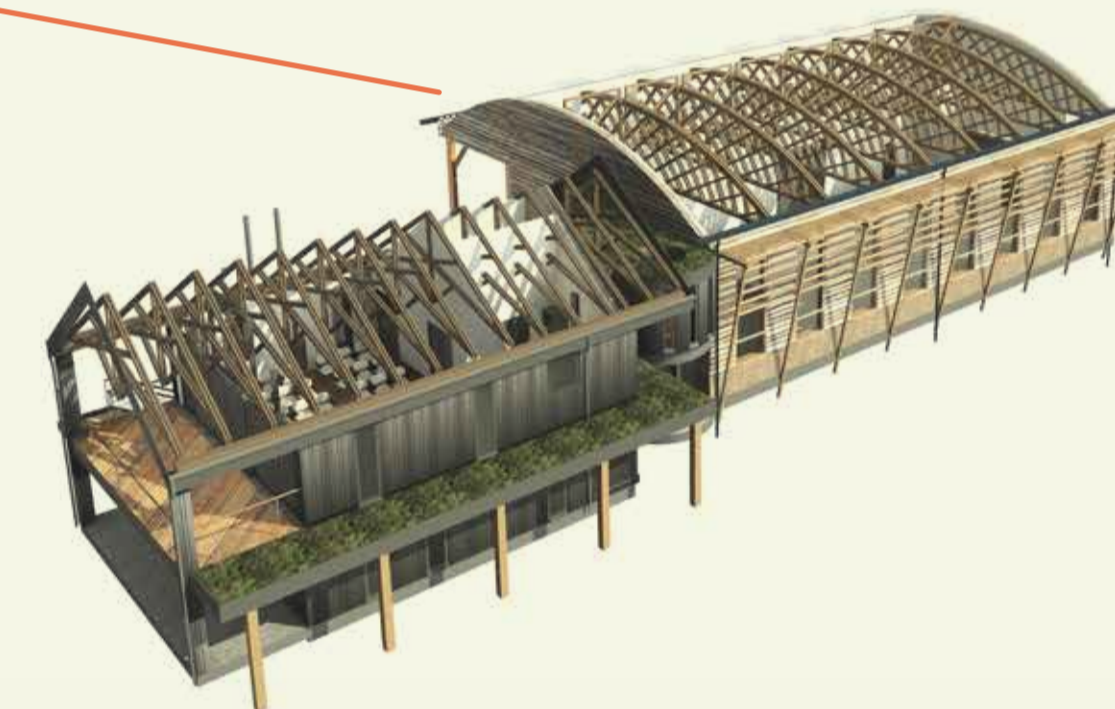
Egwyddorion adeiladu cynaliadwy

- Yn dilyn egwyddorion hynod effeithlon Passivhaus byddwn yn lleihau ôl troed ecolegol yr adeiladau.
- Bydd dull ffabrig cyntaf o ddylunio lle rydym ni'n adeiladu waliau, toeau a lloriau gydag inswleiddio enfawr ac adeiladu tynn aer yn arwain at adeiladau ynni isel iawn nad oes angen llawer o ynni arnynt ar gyfer gwresogi neu oeri / lleoedd gwag.
- Bydd pob arwyneb daear yn arwynebau athraidd, bydd y rhain yn sicrhau bod yr holl ddŵr wyneb yn cael ei gadw ar y safle ac nad yw'n achosi problem llifogydd i'n cymdogion na'r amgylchedd. Bydd System Ddraenio Trefol Cynaliadwy (SUDS) newydd hefyd yn darparu cynefin naturiol newydd i helpu i gynyddu bioamrywiaeth y safleoedd.
- Byddwn yn cynhyrchu 100% o'n trydan ar y safle i bweru ein cyfleusterau a'n cerbydau trydan.
- Bydd yr holl oleuadau yn ynni isel a bydd goleuadau allanol yn cael eu cadw i isafswm.
- Mae cynllun y cynnig wedi cael ei ddylanwadu'n drwm gan dopograffeg bresennol y safle. Mae trefn plannu brodorol helaeth wedi'i chynllunio ochr yn ochr â diogelu a gwella'r amgylchedd y llysiau'r afu presennol.—
- Bydd y safle yn dod yn gyrchfan ar gyfer hyrwyddo ymrwymiad Cymru i ddyfodol carbon isel cynaliadwy.



Flagship facility

Constructed from a panelisation system created out of locally sourced Welsh timber and insulation this will be the main manufacturing element of our proposal. With the help of our participants, we will construct timber panels for the construction of schools, hospitals and affordable housing throughout Wales. The welfare unit will provide amenities for our staff and a space for training for our participants. They will both be exemplar architectural spaces for sustainable construction.



Private rental startup spaces

4 x 90m² private start-up spaces will be provided enabling new start-up businesses or small established operations an attractive and sustainable space to operate from.

Sustainable construction principles

- Following ultra efficient Passivhaus principles we will minimise the buildings' ecological footprint.
- A fabric first approach to design where we construct walls, roofs and floors with massive insulation and air tight construction will result in ultra-low energy buildings that require little energy for space heating or cooling.
- All ground surfaces are to be permeable surfaces, these will ensure that all surface water is kept on site and not cause a flood issue to our neighbours or the environment. A new Sustainable Urban Drainage System (SUDS) will also provide a new natural habitat to help increase the sites biodiversity.
- We will generate clean electricity on site to power our facilities and electric vehicles.
- All lighting will be low energy and external lighting kept to a minimum.
- The layout of the proposal has been heavily influenced by the existing site topography. An extensive native planting regime is planned alongside the protection and environment enhancement of the existing Liverwort.
- The site will become a destination for promoting Welsh commitment to a sustainable low carbon future.



For more information visit / Am ragor o wybodaeth, ewch i...

www.downtoearthproject.org.uk/woodworks

Supported by players of



Awarded funds from



Down
to
Earth

